



# INDOFINE Chemical Company, Inc.

121 Stryker Lane, Bldg. 30, Suite 1 • Hillsborough, NJ 08844 • U.S.A.

Phone: (908) 359-6778 • FAX: (908) 359-1179

website: [www.indofinechemical.com](http://www.indofinechemical.com)

e-mail: [chemical@indofinechemical.com](mailto:chemical@indofinechemical.com)

## CERTIFICATE OF ANALYSIS

Catalog Number: 020453S

Product Name: **EMODIN with HPLC**  
(Archin; Frangulinic acid; Emodol; Alatinone)

CAS Number: [518-82-1]

Lot Number: 1708857

Chemical Formula: C<sub>15</sub>H<sub>10</sub>O<sub>5</sub>

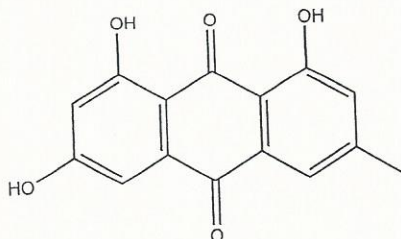
Molecular Weight: 270.25

Appearance: Orange powder

Water content: 1.1%

Storage: Store in a cool, dry place

Purity(HPLC): 98.89%





# INDOFINE Chemical Company, Inc.

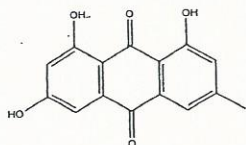
121 Stryker Lane, Bldg. 30, Suite 1 • Hillsborough, NJ 08844 • U.S.A.

Phone: (908) 359-6778 • FAX: (908) 359-1179

website: [www.indofinechemical.com](http://www.indofinechemical.com)

e-mail: [chemical@indofinechemical.com](mailto:chemical@indofinechemical.com)

## HPLC ANALYSIS



Catalog No.: 020453S

Product Name: Emodin

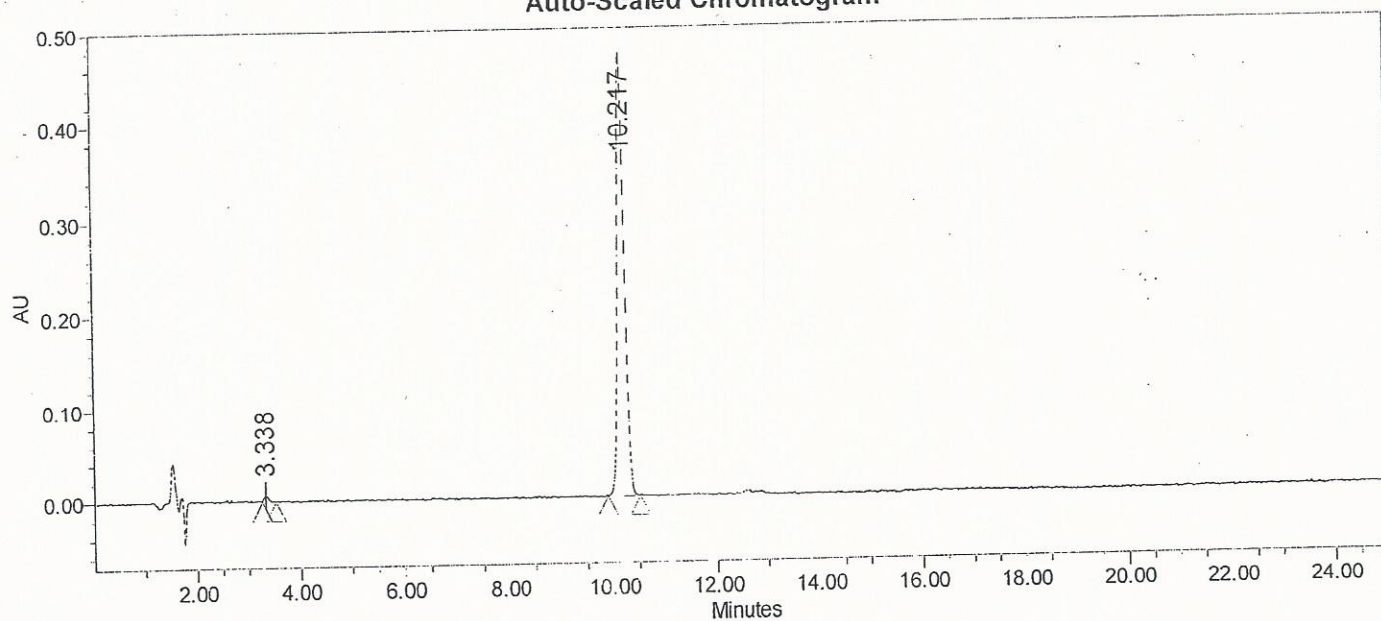
Lot No.: 1708857

### SAMPLE INFORMATION

Sample Name: Emodin  
Sample Type: Unknown  
Vial: 5  
Injection #: 1  
Injection Volume: 10.00 ul  
Run Time: 25.0 Minutes

Acquired By: System  
Sample Set Name:  
Acq. Method Set: Emodin  
Processing Method: Samples  
Channel Name: 290.0nm  
Proc. Chnl. Descr.: PDA 290.0 nm

### Auto-Scaled Chromatogram



### Peak Results

Name	RT	Area	% Area	USP Plate Count	USP Resolution
1	3.338	50699	1.11	4236.0	
2	10.217	4516967	98.89	26948.8	33.7